

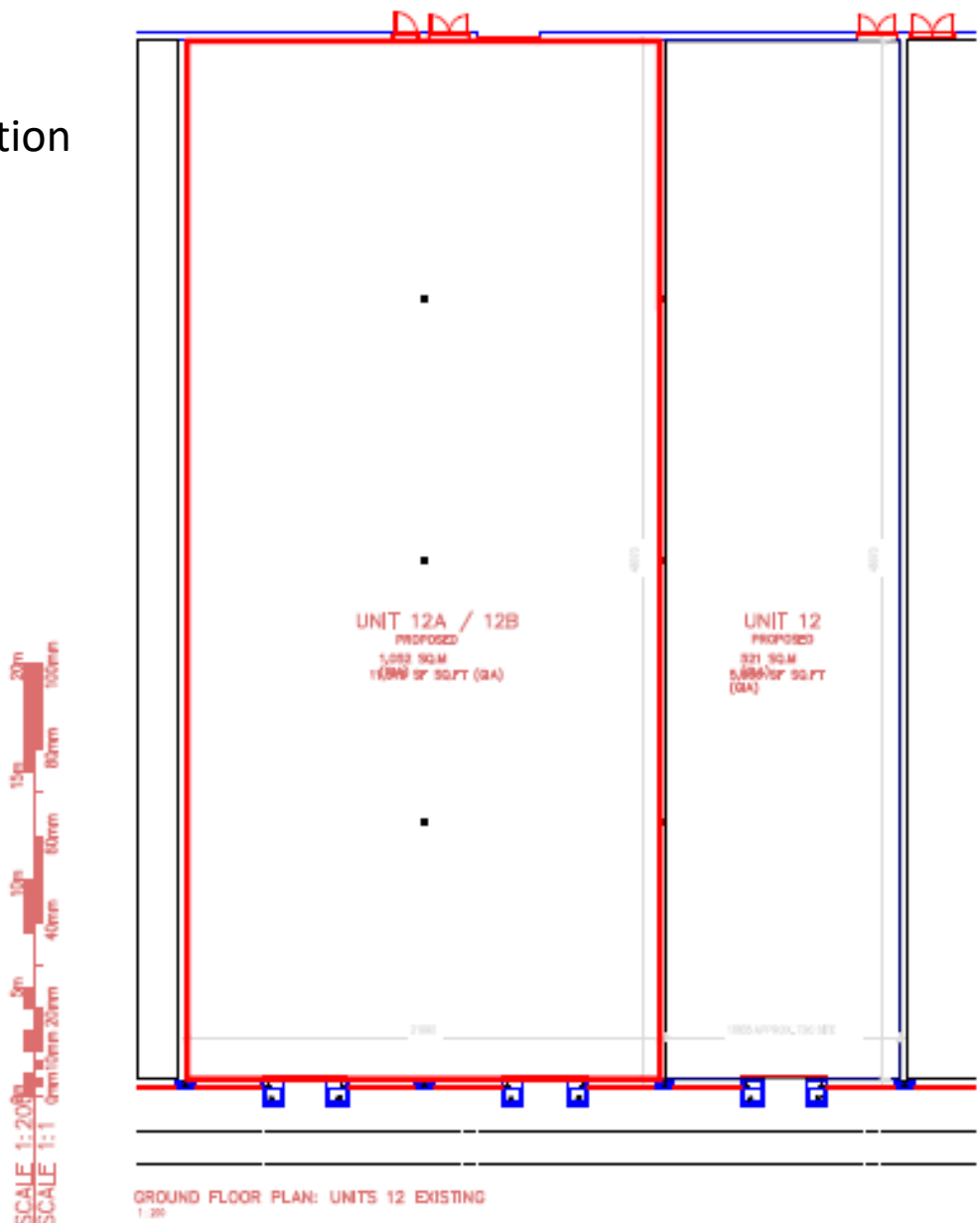


## Planning Committee B

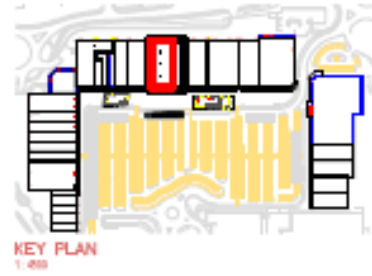
24/00222/FULM

Units 12A and 12B Monks Cross Shopping Park

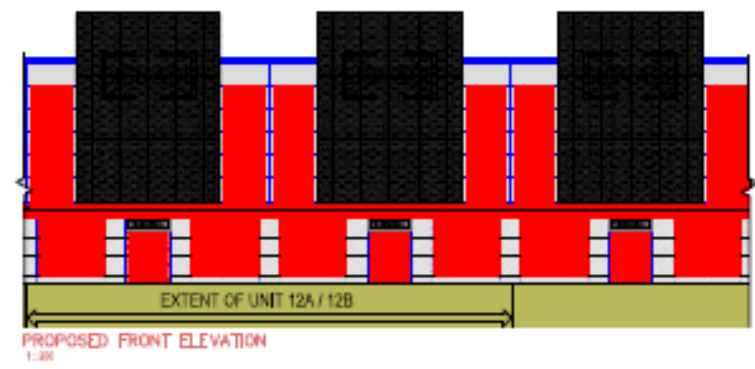
# Existing Layout and location



SCALE 1:200 @ 20m  
SCALE 1:1 @ 0mm/0mm 20mm  
0m 40mm 60mm 80mm 100mm



Copyright of this drawing is the property of Urban Redevelopment Limited. It must not be reproduced, stored in a retrieval system, or used in any way without the prior written consent of Urban Redevelopment Limited.  
Urban Redevelopment Limited  
The Hongkong and Shanghai Banking Corporation Limited  
27/F, 100 Queen's Road Central, Hong Kong  
Tel: +852 2211 2211  
Fax: +852 2211 2211  
All dimensions shall be in accordance with the relevant drawings. ANY DIMENSIONS SHALL BE IN ACCORDANCE WITH THE RELEVANT DRAWINGS.



Client	MONKS CROSS SHOPPING PARK TRUST
Project	MONKS CROSS SHOPPING PARK REDEVELOPMENT
Drawing	UNIT 12A / 12B GROUND FLOOR
Scale	1:200 @ A3
Date	01/06/2024
Project Reference No.	1820 URB U12 [03]
Revision	01
	10

Layout with mezzanine

